

Plot each complex number and find its absolute value.

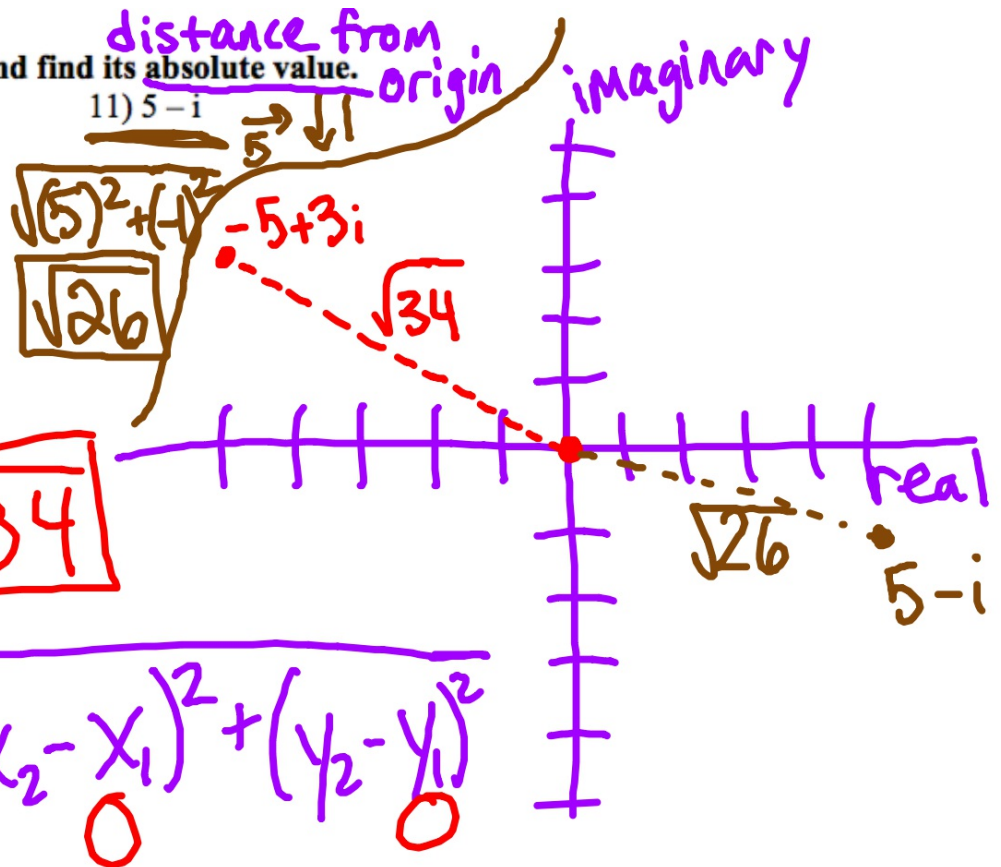
10) $-5 + 3i$

$\leftarrow \uparrow 3$
5

$$\sqrt{(-5)^2 + (3)^2}$$

$$= \sqrt{25 + 9} = \sqrt{34}$$

11) $5 - i$



$$\sqrt{(5)^2 + (-1)^2}$$

$$\sqrt{26}$$

Distance: $\sqrt{(x_2 - x_1)^2 + (y_2 - y_1)^2}$

$\underbrace{\quad}_0 \quad \underbrace{\quad}_0$

Summary: