

8/16

Welcome!

#1.2a

Ms. Walczak
(Wall-Zack)

DO NOW:

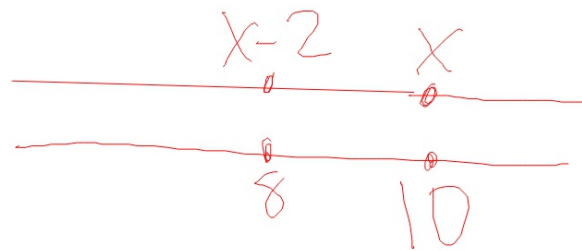
- **Turn in** any late homework to the bin on Ms. Walczak's desk.
- You might want to **grab a calculator** from the wall by the door.
- Take out your **Warm Up Sheet**.

Homework: [Google Classroom #0a](#) and [#0b](#) - due [Friday](#)

Essential Question: How do you solve equations?

$$\begin{array}{l} 3x + 14 = 2 \\ 3x = -12 \\ x = -4 \end{array} \quad \begin{array}{l} 3(-4) + 14 = 2 \\ 3(-4) = -12 \\ \checkmark \end{array}$$

At your boards, solve these equations and show it's true with a double number line.



1) $x - 2 = 8$

2) $4x = 32$

3) $3x + 2 = 17$

4) $2x - 4 = 10$

5) $0.5x + 5 = 50$

6) Create your own so that $x = 4$