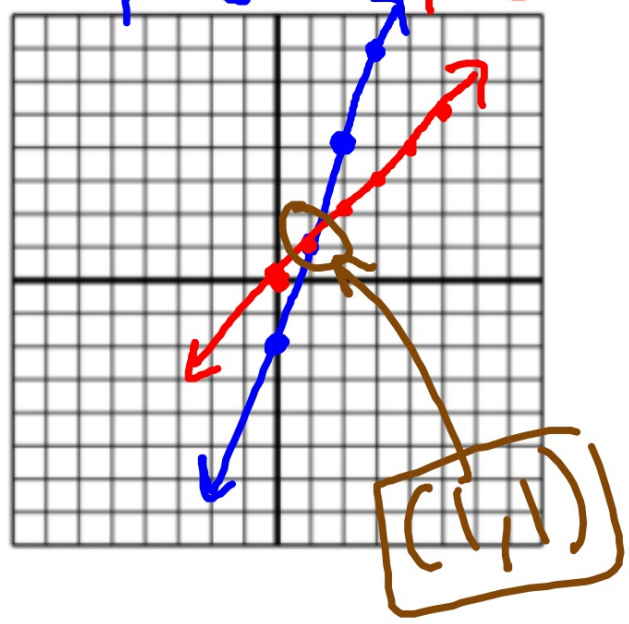
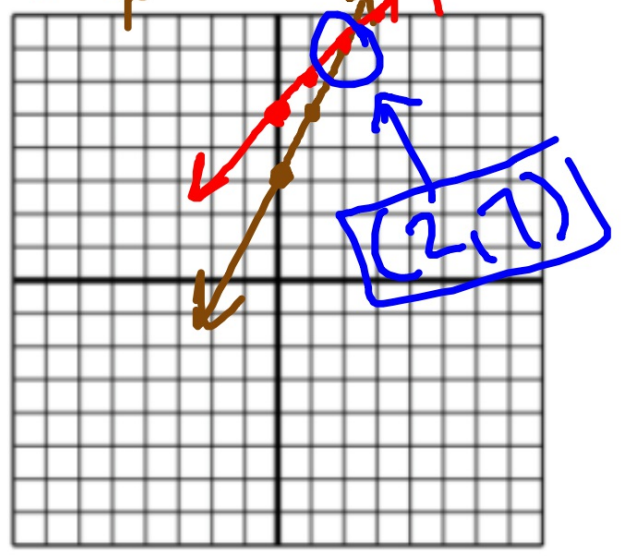


Example 4: Solve by Graphing: $y = mx + b$ $m = \text{slope} = \frac{\text{rise}}{\text{run}}$ $b = y\text{-int}$

$y = 3x - 2$ and $y = \frac{1}{2}x + 0$



$y = 2x + 3$ and $y = \frac{1}{2}x + 5$



Summary: 3 TYPES OF SOLUTIONS: 1, NO, ∞
TO SOLVE FOR 1 SOLUTION, GRAPH BOTH LINES AND FIND WHERE THEY INTERSECT