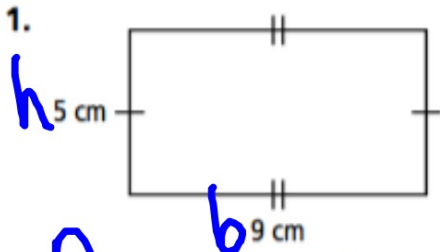


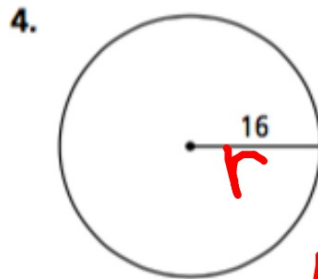
Find the perimeter of each figure.



Rectangle

$$P = 2(b+h)$$
$$= 2(9+5)$$
$$= \boxed{28 \text{ cm}}$$

Find the circumference of each circle in terms of π .



leave π
in answer

$$C = \pi d = 2\pi r$$
$$= 2\pi(16)$$
$$= \boxed{32\pi \text{ units}}$$

Find the area of the rectangle with the given base and height.

11. b , h
4 ft, 15 in.

$$12 \text{ in} = 1 \text{ ft} \quad 15 \text{ in} \div 12 = 1.25 \text{ ft}$$

$$A = b \cdot h = 4 \cdot 1.25 = \boxed{5 \text{ ft}^2}$$

Find the area of each circle in terms of π .

14.

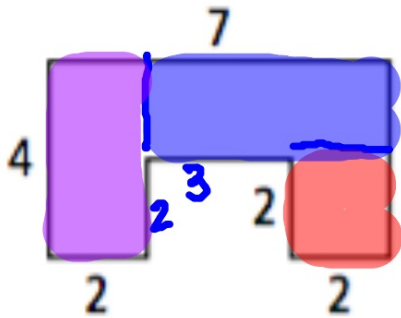


$$A = \pi r^2$$

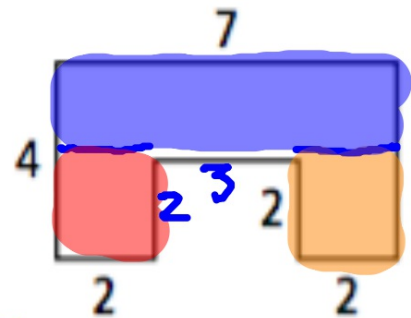
$$= \pi (12.5)^2$$

$$= \boxed{156.25\pi \text{ units}^2}$$

18.



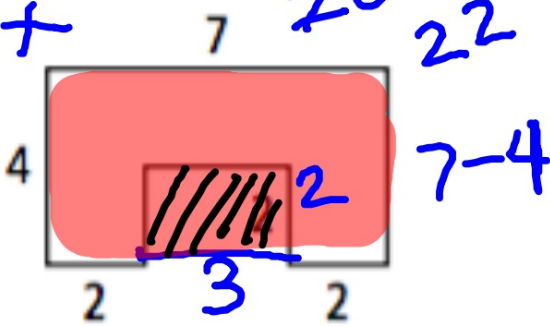
18.



22 units^2

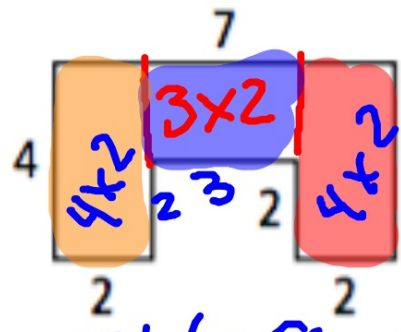
18.

+



$28 - 6 = 22$

18.



$8 + 6 + 8 = 22$